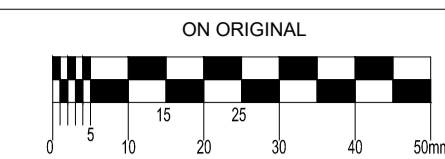


R761 TO BLACKLION MANOR ROAD
LINK SECTION TYPICAL CROSS SECTION A - A
SCALE 1:100

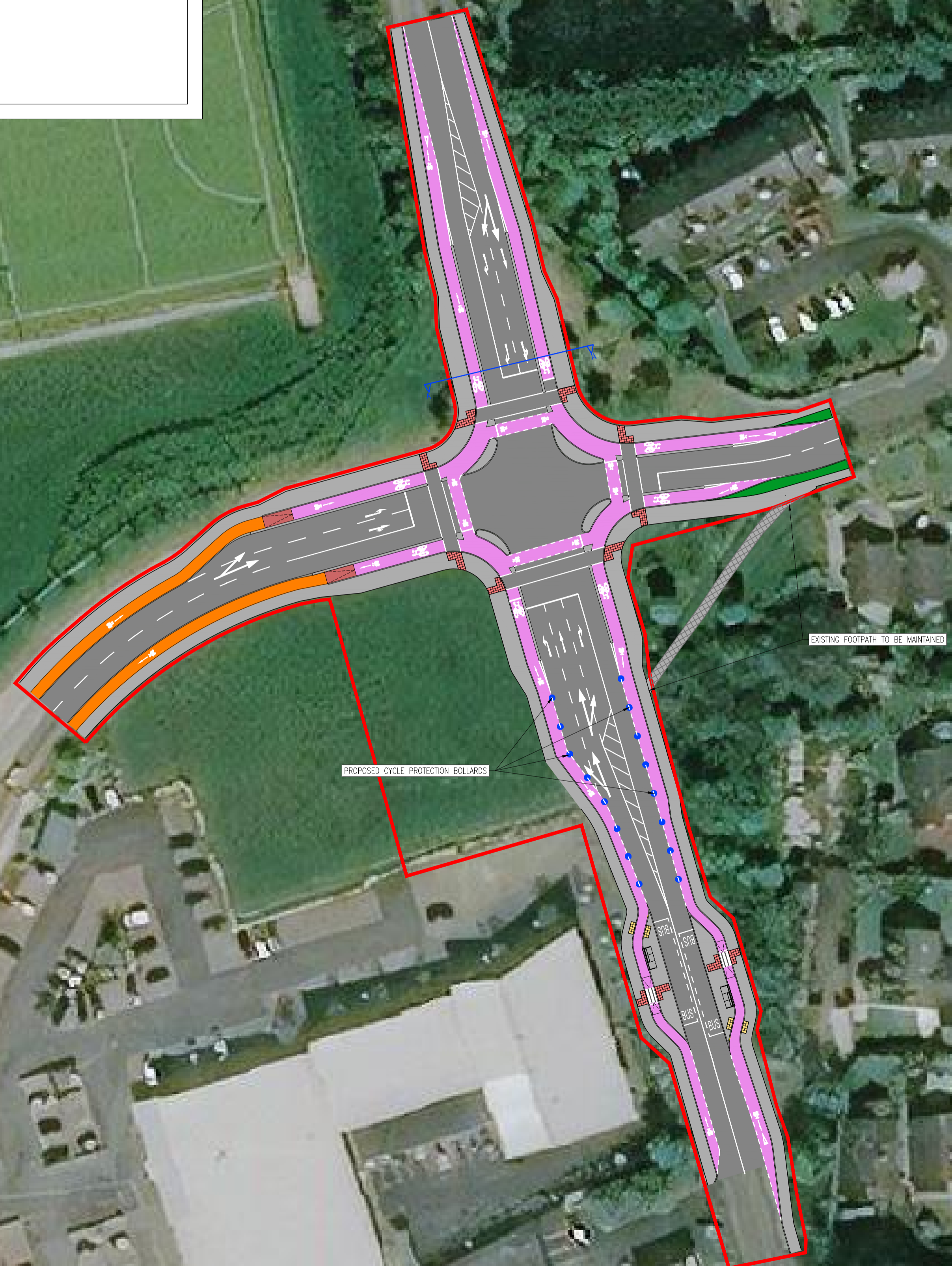
© COPYRIGHT OF THIS DRAWING IS RESERVED BY DBFL CONSULTING ENGINEERS. NO PART SHALL BE REPRODUCED OR TRANSMITTED WITHOUT THEIR WRITTEN PERMISSION.



- NOTES:**
1. ALL WORKS TO BE CONSTRUCTED IN ACCORDANCE WITH THE TII SPECIFICATION FOR ROAD WORKS UNLESS OVERRIDDEN BY LOCAL OVERSEEING AUTHORITY'S STANDARDS
 2. ALL ROAD MARKINGS & SIGNS SHALL COMPLY FULLY WITH THE TRAFFIC SIGNS MANUAL PUBLISHED BY THE DEPARTMENT OF TRANSPORT.
 3. SIGNS & MARKINGS: CONTRACTOR TO CONFIRM PRECISE SETTING OUT WITH EMPLOYERS REPRESENTATIVE PRIOR TO COMPLETION.
 4. ALL TRAFFIC MANAGEMENT TO COMPLY FULLY WITH THE PROVISIONS OF CHAPTER 8 OF THE TRAFFIC SIGNS MANUAL
 5. ALL CO-ORDINATES ARE TO IRISH TRANSVERSE MERCATOR.
 6. ALL LEVELS ARE TO ORDNANCE DATUM AND ARE IN METRES
 7. ALL PEDESTRIAN, CYCLE AND VEHICULAR ROUTES MUST BE RETAINED IN ACCORDANCE WITH APPROVED TRAFFIC MANAGEMENT PLAN.

LEGEND

	PROPOSED ROAD
	PROPOSED FOOTPATH
	EXISTING FOOTPATH TO BE RETAINED
	PROPOSED CYCLE LANE
	PROPOSED CYCLE TRACK
	GRASS VERGE/LANDSCAPED AREA



ORDNANCE SURVEY IRELAND LICENCE
No EN 0017922
© ORDNANCE SURVEY IRELAND
GOVERNMENT OF IRELAND

P01	19-04-2022	PRELIMINARY DESIGN ISSUE	GJS	JH
rev	date	description	by	chkd.
		A - Approved		
		B - Approved with comments		
		C - Do not use		
client approval				
suitability		issue purpose		
S2 - INFORMATION		PRELIMINARY DESIGN ISSUE		

DBFL Consulting Engineers
Civil, Structural & Transportation Engineering
www.dbfl.ie

DUBLIN OFFICE: Ommond House, Upper Ommond Quay, Dublin 7, D07 W704
PHONE: +353 1 400 4000

CORK OFFICE: Phoenix House, Monahan Road, Cork, T12 H1XV
PHONE: +353 (0) 21 2024538

WATERFORD OFFICE: Suite 10 The Arkum, Marzana Gate, Canada Street, Waterford, X91 W028
PHONE: +353 51 300 500

project ref.			
REDFORD PARK			
drawing title			
PROTECTED SIGNALISED JUNCTION			
client			
WICKLOW COUNTY COUNCIL			
designed by	author	scale	sheet size
JH	OWF	1:500	A1
drawing no.	revision		
190092-DBFL-RD-SP-DR-C-1901	P01		